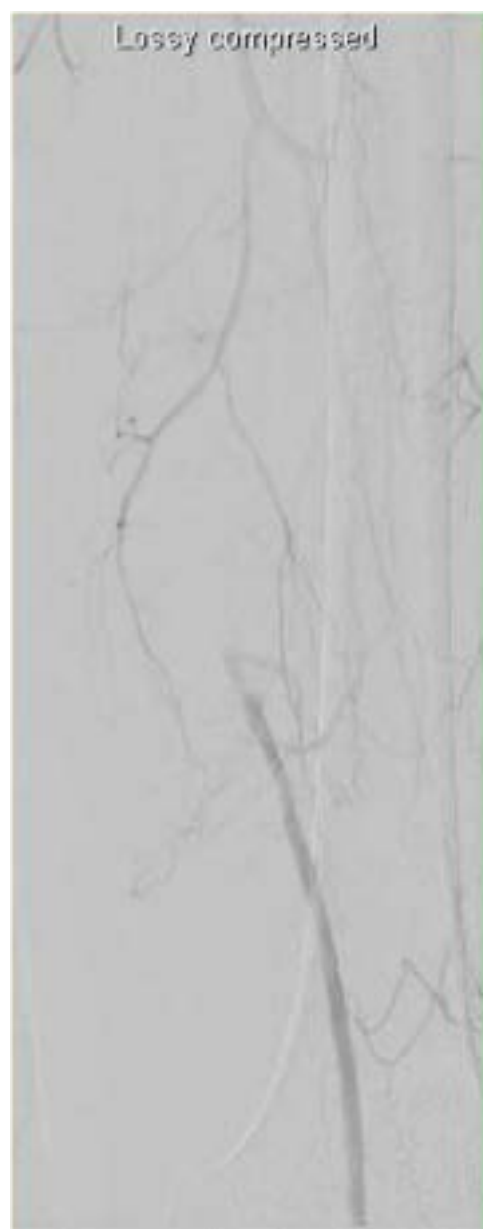


Case 1

- 66 yo woman with severe LLE claudication
- ABI- 0.3
- Duplex reveals an SFA occlusion



Options?

- What tools will you use?
- How are you going to treat?

Lossy compressed

LEFT



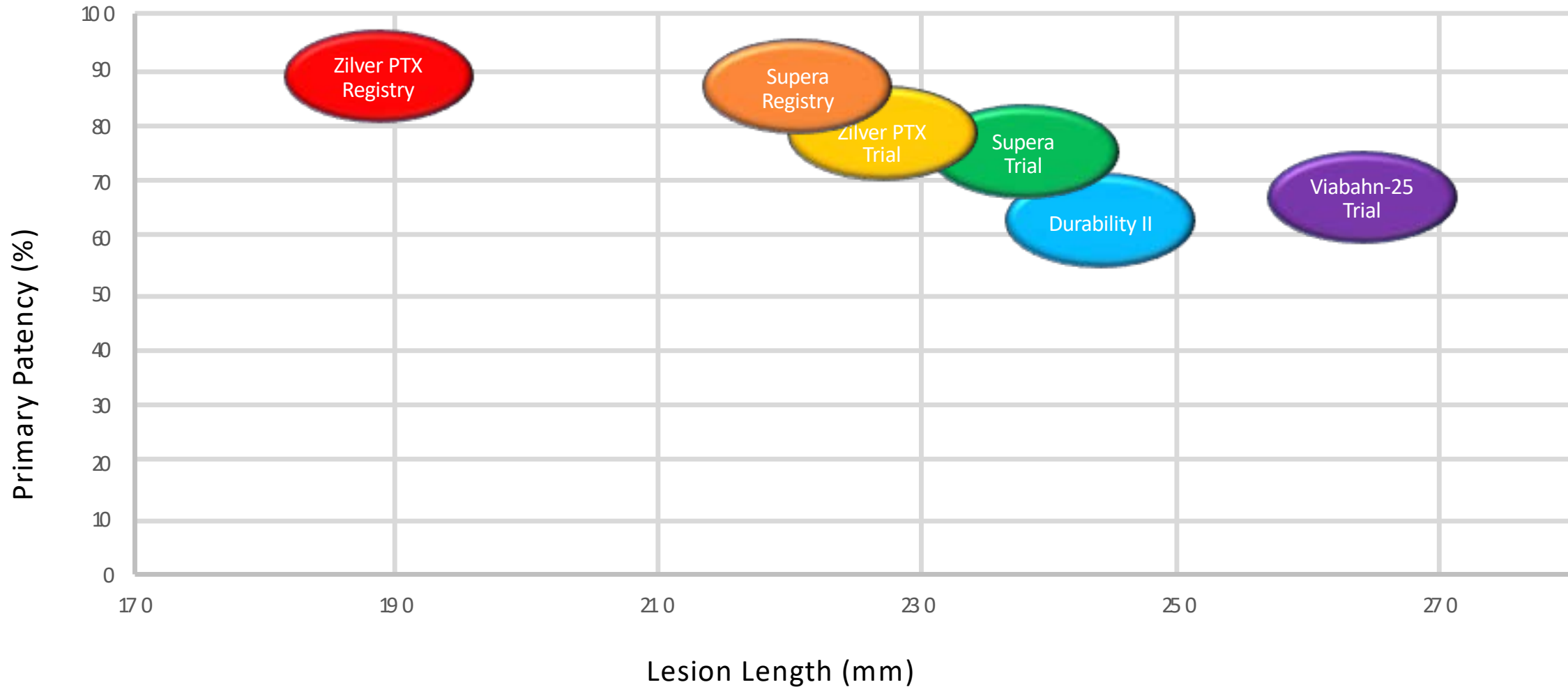
- Returns 6 months later with instant occlusion
- Options?



- Durability II trial
 - Mean lesion length of 242mm
 - 1yr primary patency 64.8%
- Zilver PTX
 - 1 year primary patency 77.6% (in prospective single arm multicenter study)
 - Mean lesion length 226mm
 - 1 year primary patency 86.1% in post market registry
 - Mean lesion length 189mm
- Viabahn-25cm trial
 - 1 year primary patency 67%
 - Mean lesion length of 265mm
- Supera-
 - 1 year primary patency 73.7% long lesion cohort of multicenter trial
 - Mean lesion length 240mm
 - 1 year primary patency of 81.5% in long lesion registry
 - Mean lesion length of 223.4mm

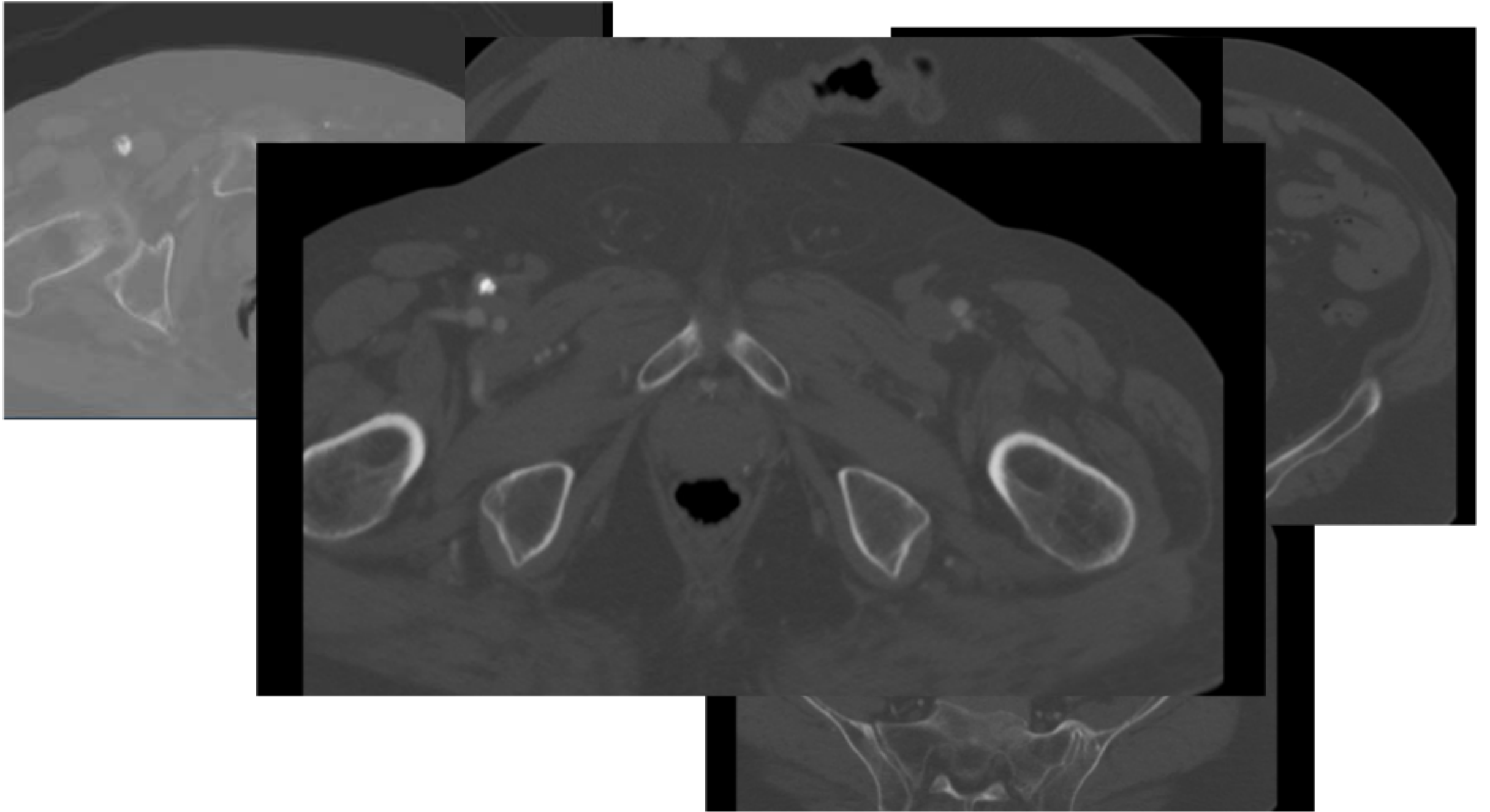
Long SFA Lesion Trials

Trial	Lesion length (mm)	12 month patency (%)
Durability II (nitinol stent)	242	64.8
Viabahn-25 trial	265	67
Supera Trial	240	73.70%
Zilver PTX multicenter study	226	77.6
Supera registry	223	81.5
Zilver PTX registry	189	86.1



Case 2

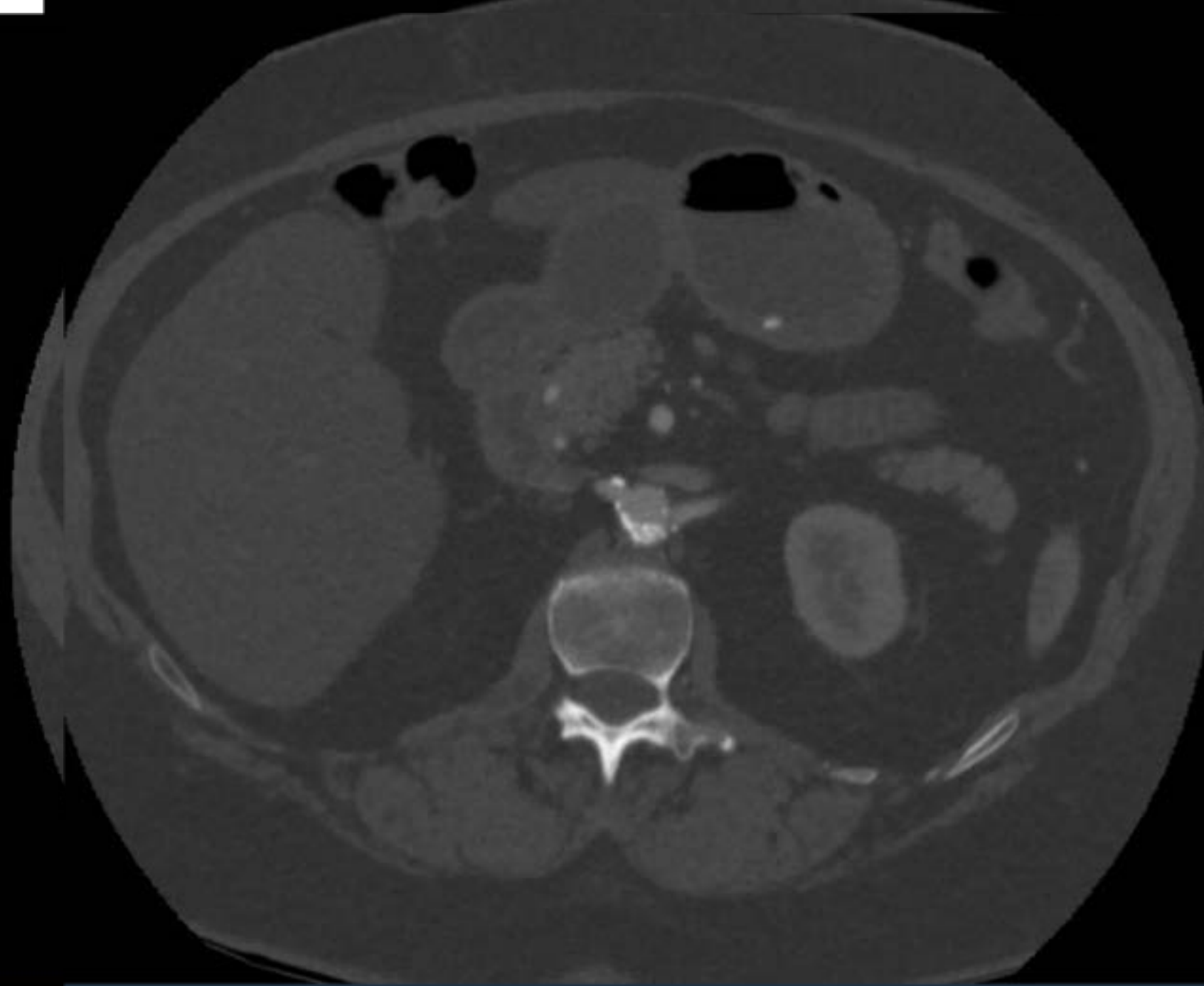
- 69 year old thin gentleman with rest pain
- PMHx: HTN, smoking history



Options?

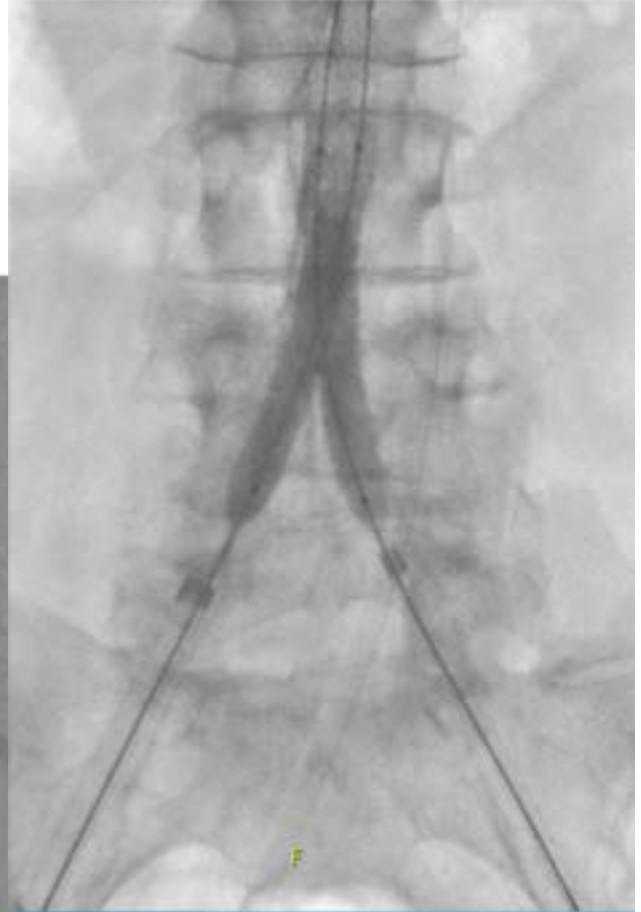
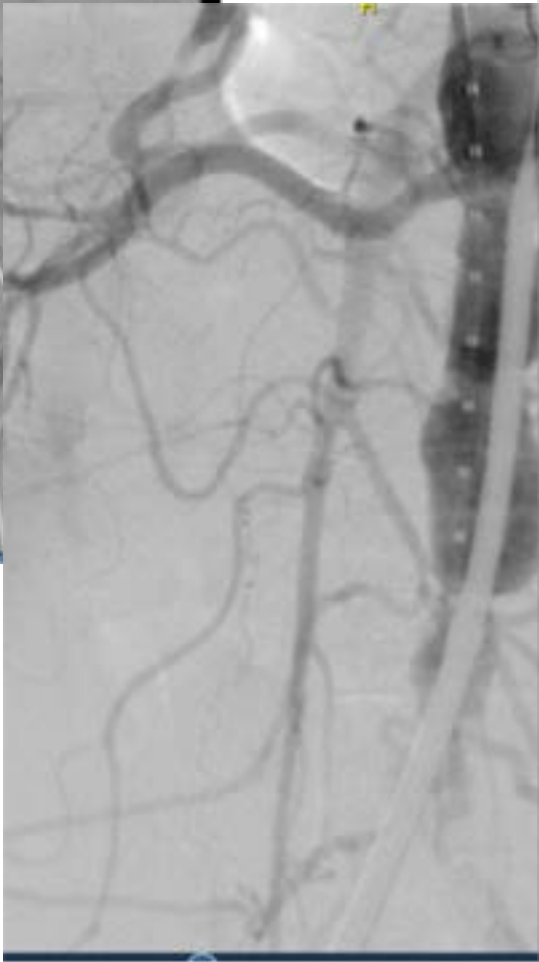
- What tools will you use?
- How are you going to treat?

What now?



Options?

- What tools will you use?
- How are you going to treat?





Segmental BP

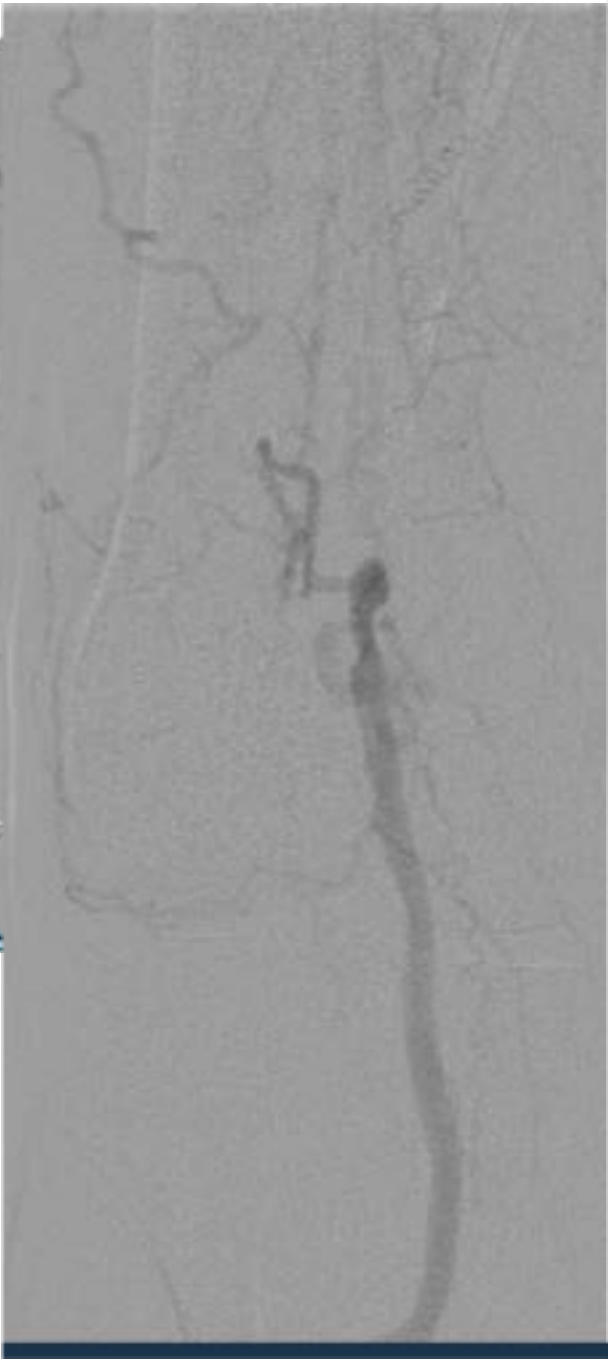
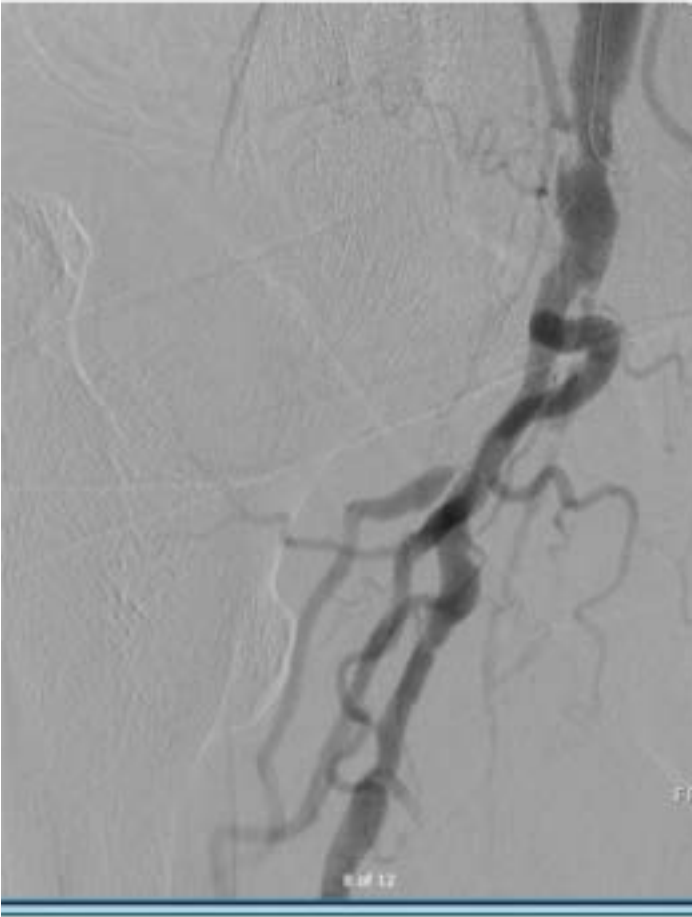
	Right			Left		
Brachial:		146	Index	Brachial:	147	Index
Ankle (PT):		163	1.11	Ankle (PT):	171	1.16
Ankle (DP):		158	1.07	Ankle (DP):	153	1.04

Case 4:

- 85 year old obese man with severe bilateral short distance claudication
- PMHX: CAD, COPD, HTN, HLD
- Recommended exercise, cilastazol, weight loss for 1 year
- Kept coming back BEGGING For intervention

Options?

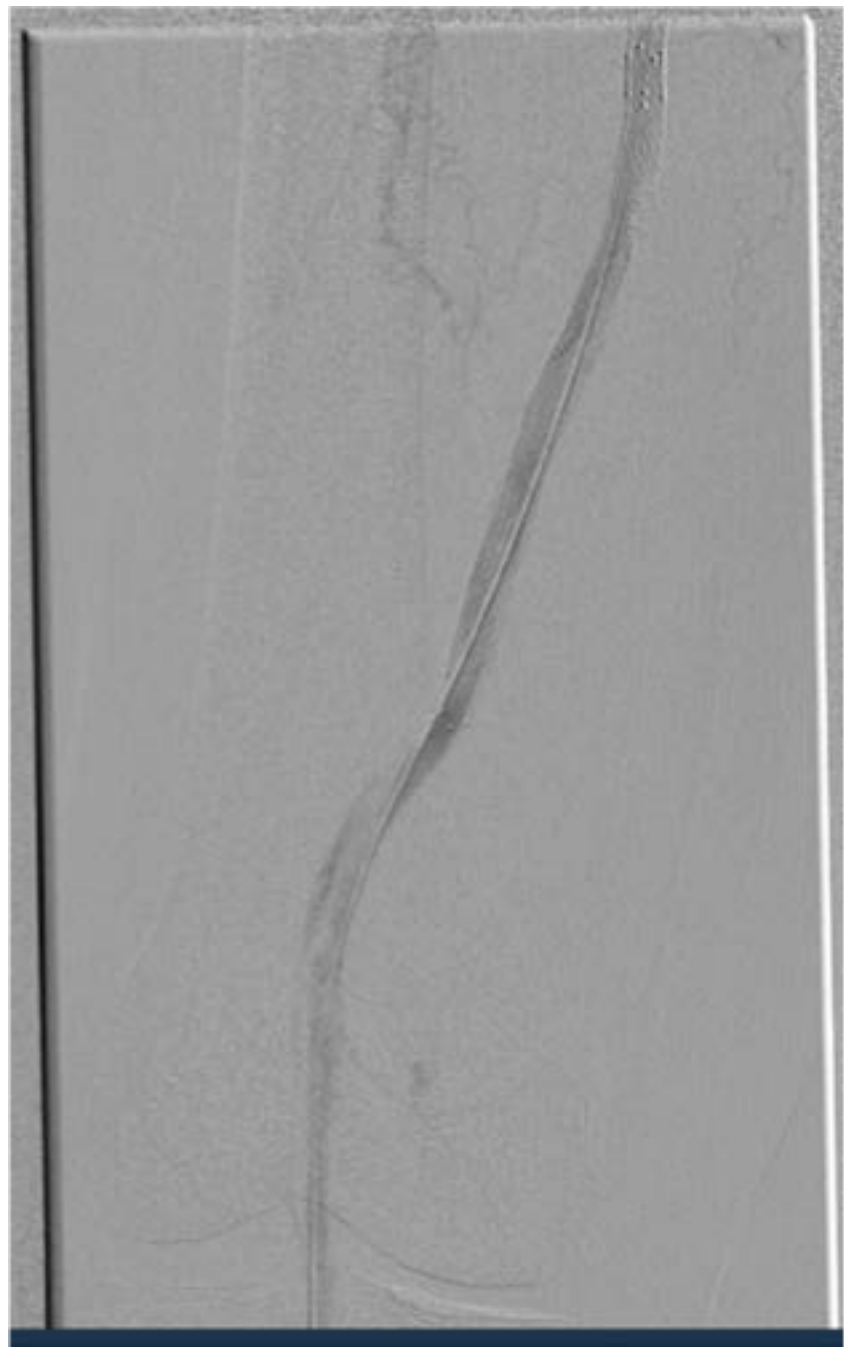
- What tools will you use?
- How are you going to treat?



What now?



Now how shall we treat?





Indication:

f/u PAD.

Results:

Lower Extremities Segmental Pressure [mmHg]:

	Right	Left
Brachial	175	171
Posterior Tibial	89	87
Dorsalis Pedis	92	85
ABI (Post. Tib.)	0.51	0.50
ABI (Dors. Ped.)	0.53	0.49

Lower Extremities Doppler Waveform:

	Right	Left
Posterior Tibial	Monophasic	Monophasic
Dorsalis Pedis	Monophasic	Monophasic

Result Right Side: Moderate to Severe arterial occlusive disease

Result Left Side: Moderate to Severe arterial occlusive disease

femoral stent(s).

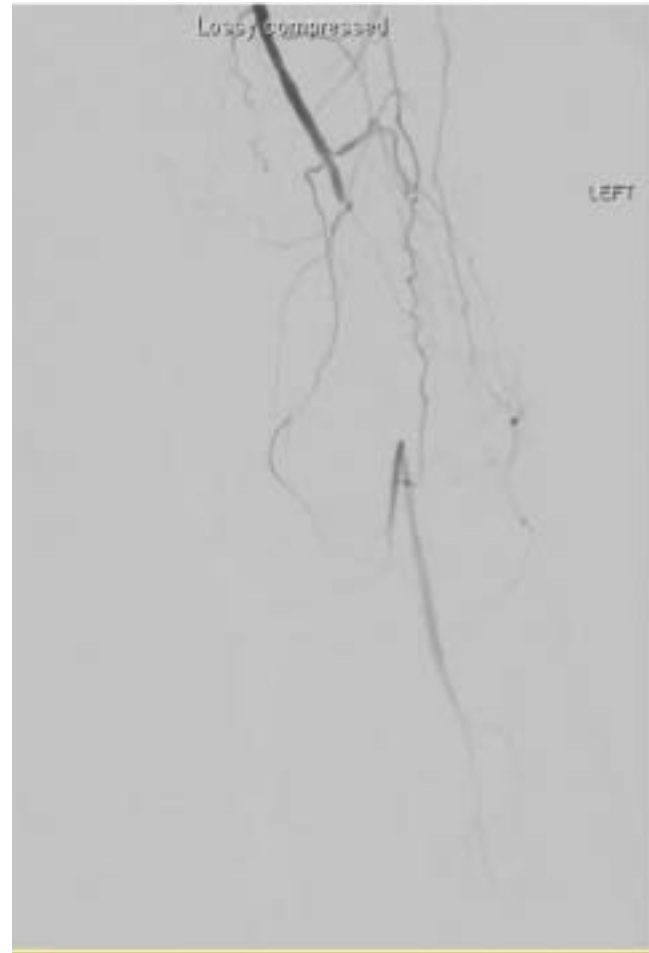
		Left				
tenosis	Doppler Waveform	PSV prox.	[cm/s] mid. distal	Stenosis	Doppler Waveform	
		46	95			
		107	116 130			
		83	117 73			
	Monophasic				Biphasic	
	Monophasic				Biphasic	
		0.80				
		0.71				

What would you do?

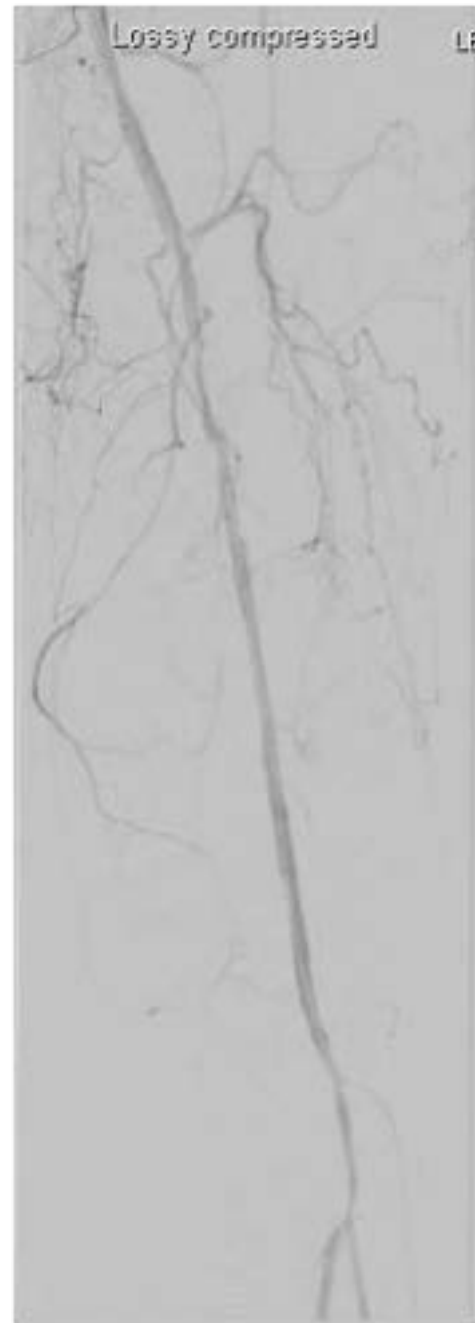
Peripheral Case 2

- 66 yo male with nonhealing ulcer of the great toe
- ABI- 0.3 and duplex with occlusion of popliteal artery

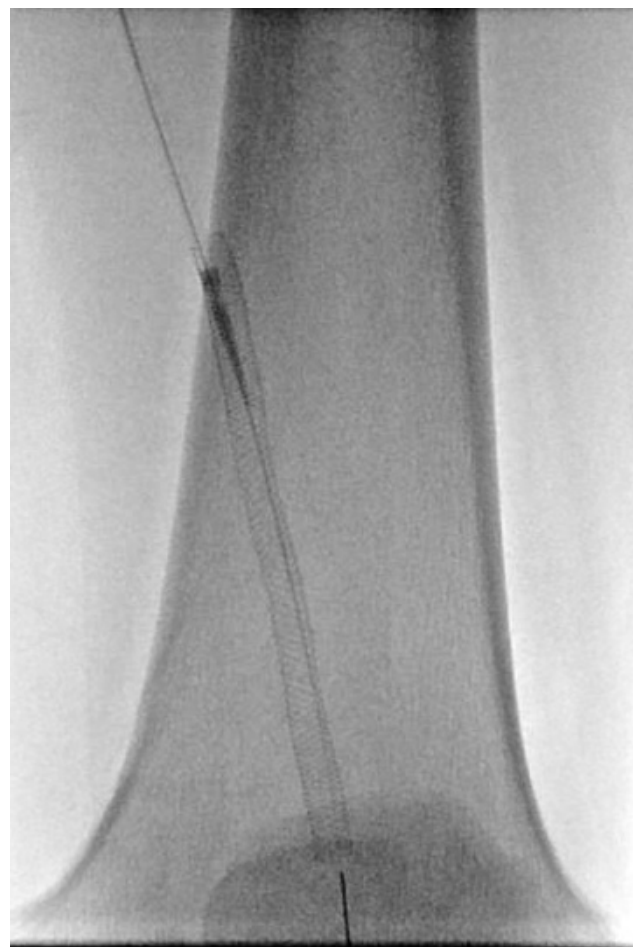
Patient 2



Options?



Options?



Considerations with location of stent?

